

# THE THORMÄHLEN & COCHRAN TEAM

For over two decades, Peter managed to handpick the very best team of professional hunters, trackers, skimmers and camp staff – meet the core of our dynamic team:



**Peter Thormählen:**  
Director/Outfitter and Big Game  
Professional Hunter



**Anso Thormählen:** Director/Financial  
Manager & Administration



**Phillip Fourie:**  
Senior Big Game Professional hunter



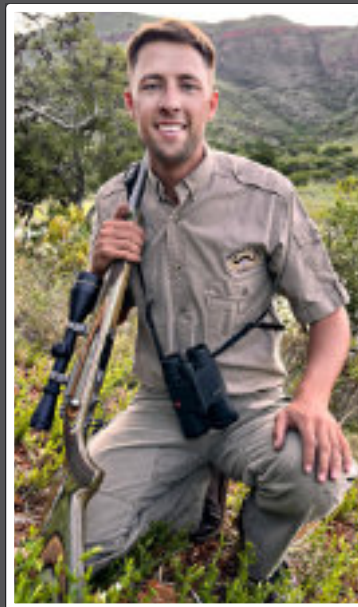
**Abiliu Huhulepo:**  
Big Game Professional Hunter



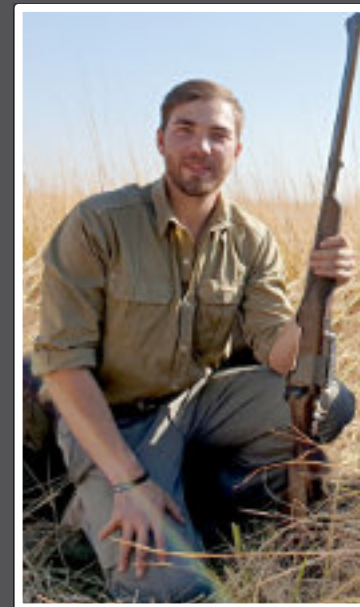
**Chris Joubert :**  
Professional Hunter



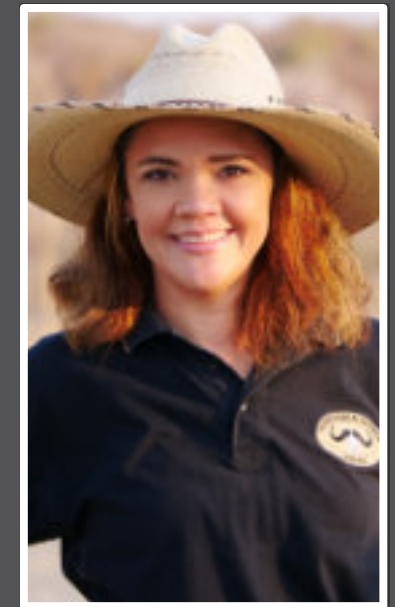
**WH Knox:**  
Big Game Professional Hunter



**Christo Combrink:**  
Professional Hunter



**Hermann Thormählen:**  
Professional Hunter



**Abby Katjimune:**  
Permits and Operations:  
Namibia

## WHY THORMÄHLEN & COCHRAN



We have been around for quite a while and built an outstanding reputation, offering free range concessions.

Our professional hunters and staff are kind, experienced and have a passion for hunting.

We are solid, trustworthy, have in-depth knowledge of nature, conservation, and client expectations.



# CONSERVATION

Hunters provide funds for conservation and play an important role in managing the size of animal populations and the environment in which the animals thrive. Thormahlen & Cochran Safaris believe in the upliftment of the standard of living, youth education, and creating mutual benefits of coexistence between people and wildlife. Clients can also donate to the Conservation Fund for Thormählen & Cochran at Conservation Force ([www.conservationforce.org](http://www.conservationforce.org)), and the donation can be used as a tax deduction.



Distribution of game meat to local communities



Donation to rural schools



Social upliftment: Community office



Developing of new and rehabilitation of existing waterholes



# NAMIBIA FREE RANGE BUSHMANLAND

Namibia is a safe country, sparsely populated, and an exciting destination. Since 2010, Thormahlen & Cochran Safaris operates in free-range concessions, called conservancies. The 2 conservancies bordering Botswana, is called N#u Jaqna and Ondjou – in short “Bushmanland”. Both areas are known for its big trophy elephant and abundance of leopard.

The N#u Jaqna Conservancy is home to the San – Bushmen – tribe and consists of 3,522 square miles or 2,25 million acres (9122 square km). Vegetation consists of Kalahari sand, flat and intertwined with acacia trees.

The Ondjou Conservancy is home to the Herero tribe – the “cattle people”, and consists of 3370 square miles or 2,15 million acres (8729 square km). Vegetation consists of Kalahari sand, grassland and a series of elephant pans.



## NAMIBIA FREE RANGE BUSHMANLAND

Each area has its own comfortable safari camp with own, locally employed personnel, firepit, lapa, fully equipped and spacious tents with en-suite bathrooms, generated electricity, and a daily laundry service. Traditional African cuisine and high quality table wine are served. Fly-in Airport: Windhoek (Hosea Katuku Airport). Charters available on request.



## CAPRIVI / KAVANGO

Thormahlen & Cochran operates on 2 Caprivi concessions, bordering each other: Kabulabula and Nakabolelwa. The concessions are characterized by the floodplains of the Chobe and Zambezi rivers: due to heavy rain on the wetlands of Angola and Zambia, the rivers expand over the flat plains during the first 4 months of the year, steadily drying up and creating network of channels and large areas of surrounding grasslands for buffalo, hippo and elephant. Hunting quota: exportable and non-exportable (“own use”) buffalo, elephant, hippo, crocodile and Chapman zebra.

Airports: Katima Mulilo, Namibia or Kasane, Botswana.



## CAPRIVI / KAVANGO

A magical, tented safari camp overlooking the plains – with all the comfort and trimmings. It is fully equipped with generated electricity, spacious with en-suite bathrooms, complete with thatched lapa, deck and firepit and daily laundry service. Additional activities: bird shooting, fishing, Boat cruise to Chobe National Park, trip to famous Victoria Falls (Zimbabwe-side).



# NAMIBIA: TROPHY ELEPHANT BUSHMANLAND



# NAMIBIA: TROPHY ELEPHANT

Caprivi



Bushmanland



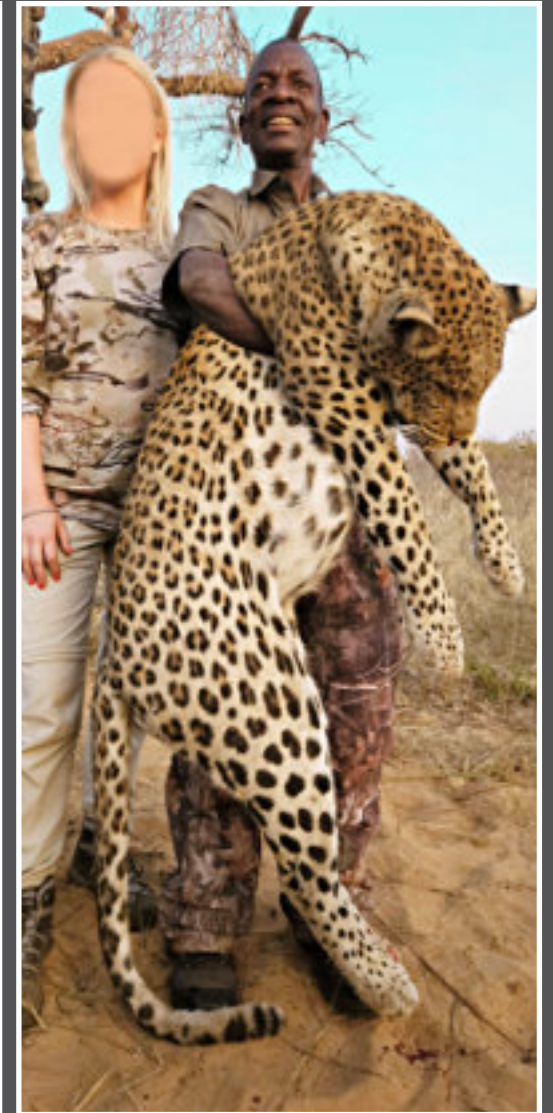
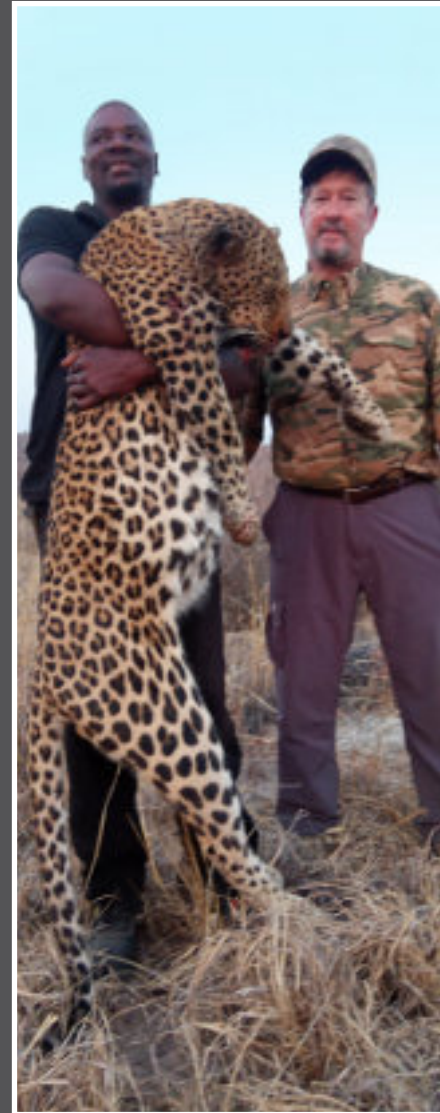
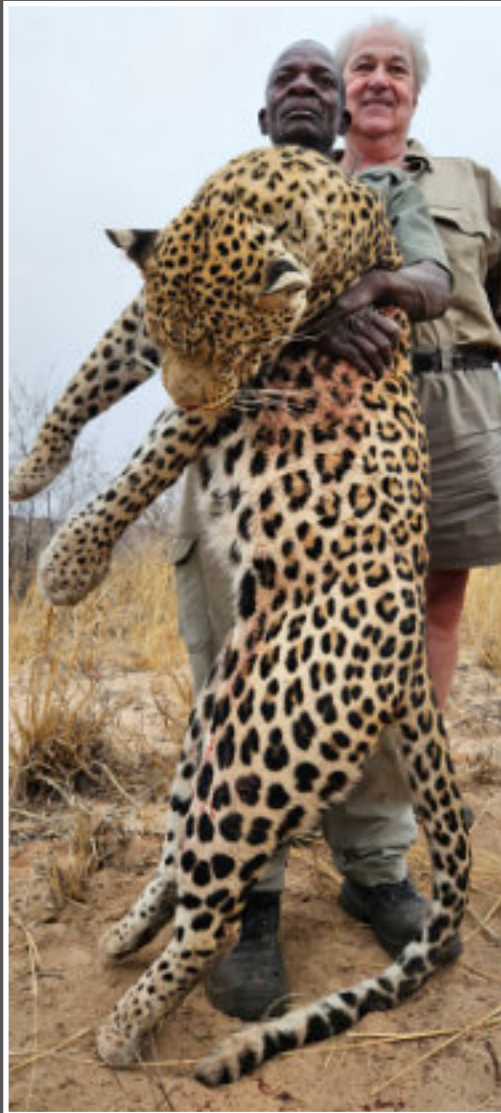
Bushmanland



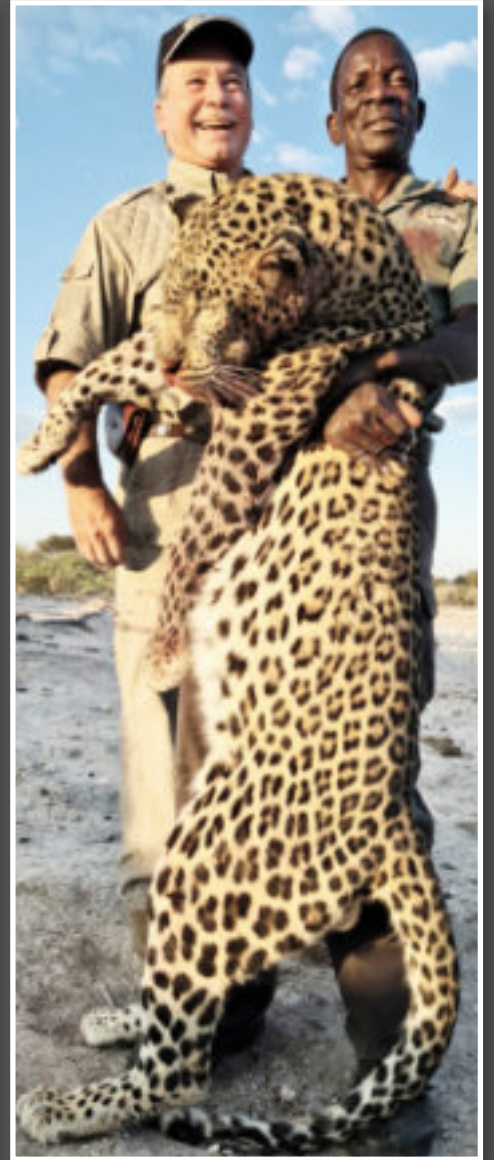
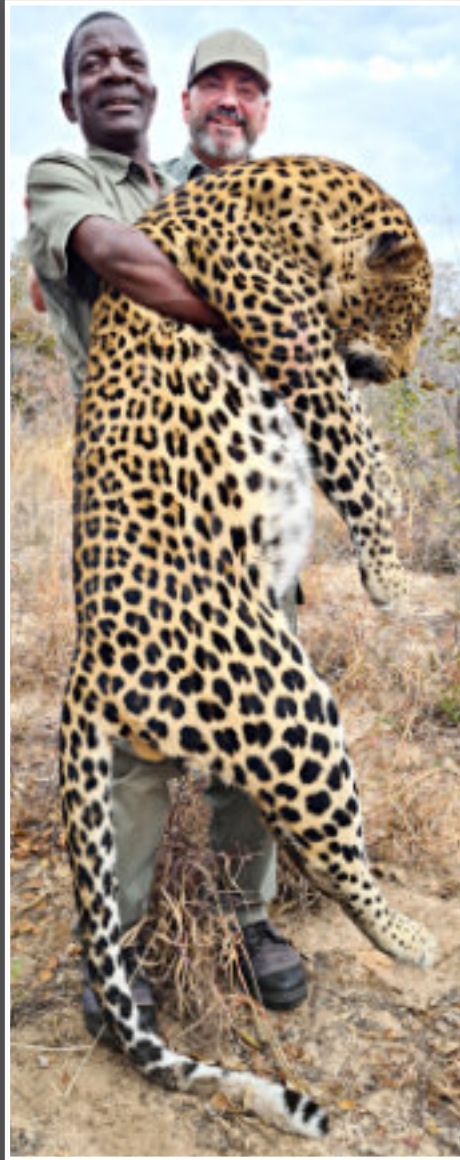
Bushmanland



# NAMIBIA: LEOPARD



# NAMIBIA: LEOPARD



# NAMIBIA: BUFFALO



# NAMIBIA: BUFFALO



# NAMIBIA: HIPPO



# NAMIBIA: CROCODILE



## NAMIBIA: OWN USE • NON-EXPORTABLE TROPHIES

The non-exportable animals are hunted in the same way as exportable trophies; having the thrill of a big game hunt, without worrying about taxidermy and importation. The proceeds of every hunt is used for the social upliftment of the local community.



# NAMIBIA: RHINO, LION, SABLE & ROAN



Southern Sable



Southern Roan



NAMIBIA

Cheetah



Cape Eland



Giraffe



# NAMIBIA

Burchell Zebra



Hartmann Zebra



Chapman Zebra



Common Lechwe



# NAMIBIA



# NAMIBIA

Black Wildebeest



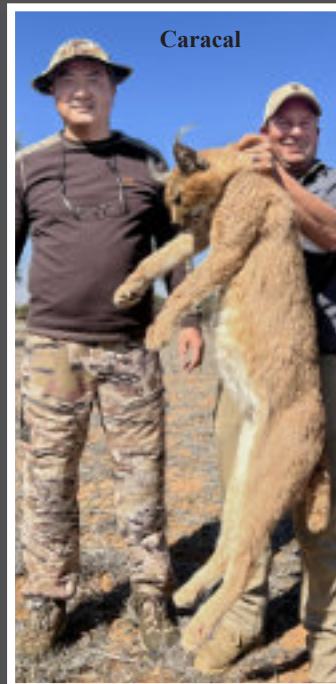
Blue Wildebeest



Brown Hyena



Caracal



Spotted Hyena



# NAMIBIA

Damara Dik-Dik



Steenbuck



Angolan Klipspringer



Common  
Duiker



# NAMIBIA

Common Blesbuck



White Blesbuck



Common Springbuck



Common Impala



Black Face Impala

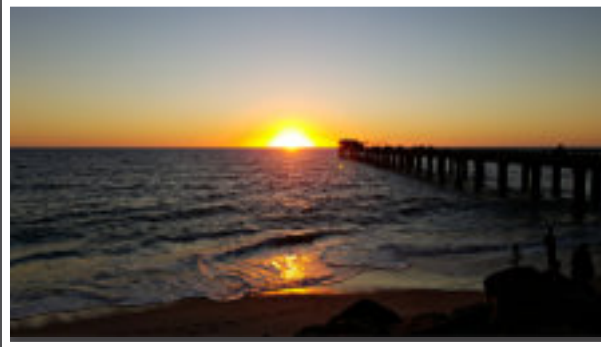


Warthog



# NAMIBIA SIGHTSEEING AND TOURS

To experience the real meaning of “the land of contrasts”, Thormählen & Cochran arrange and guide great sightseeing and fishing trips with our clients. Most popular destinations include Sossusvlei’s sand dunes, the game-packed Etosha National Park, the contrast between the ocean breeze and sand dunes of Swakopmund, the deserted ships and ghost towns along the Skeleton Coast as well as the Himba villages in remote Kaokoland. The Victoria Falls are very close to our Caprivi concessions. Some sightseeing distances are far apart; allow yourself enough time to travel and to enjoy the tour.



## A FREE RANGE SAFARI IN SOUTH AFRICA

Due to its variety of game, South Africa is a premier hunting destination. Thormahlen & Cochran Safaris specializes in hunting on free range Government Reserves – giving every hunter an opportunity to hunt in an unfenced, more challenging environment. Concessions are malaria free, not over-hunted and offers a variety of excellent trophy quality and spectacular views. Accommodation: comfortable safari camps. Arrival airport: Johannesburg (OR Tambo).



## ACCOMMODATION

Thormählen & Cochran hunts on Government Reserves which are strictly protected for the sole use of authorised hunters like you. Camps are just outside the Reserves and cater for comfort and African cuisine. It consists of brick-built buildings or thatched roof safari units; each camp has its own, unique ambiance.



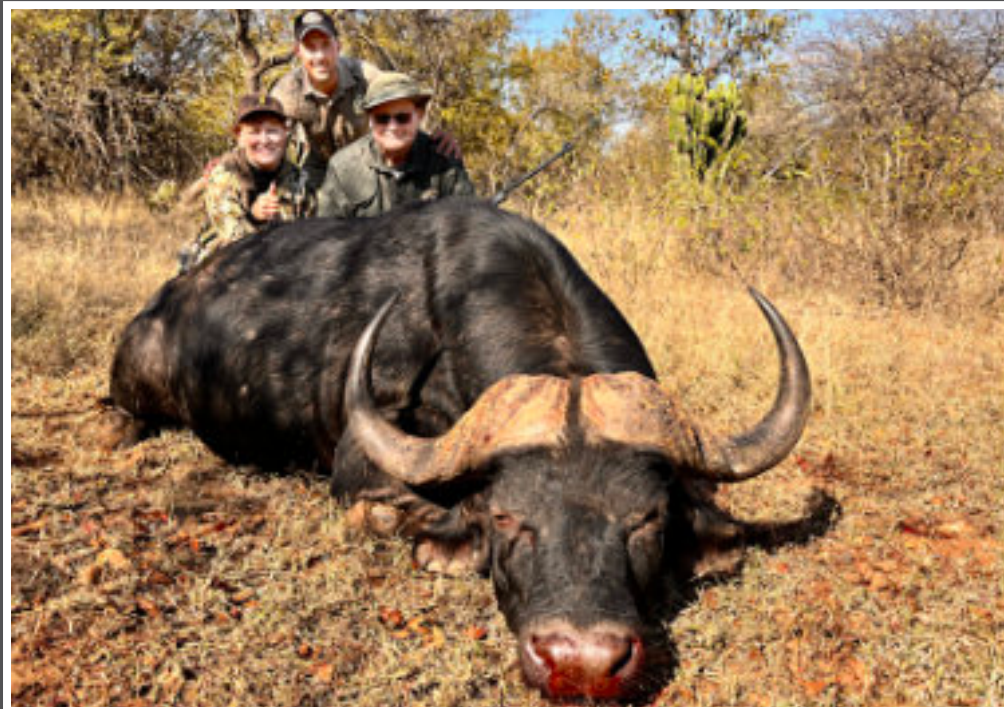
# ACCOMMODATION

It is important to communicate your food/drink preferences to us – we will do our best to cater for your needs.

We look forward to welcoming every hunter to a warm and inviting atmosphere, friendly staff and traditional homestyle cooking while experiencing true South-African hospitality.



# TROPHY GALLERY: SOUTH AFRICA - CAPE BUFFALO



# SOUTH AFRICA: RHINO

**Black Rhino**  
*bicornis michaeli*



**Black Rhino**  
*bicornis minor*



SOUTH AFRICA: LIONESS, RHINO DART & HIPPO



SOUTH AFRICA: NILE CROCODILE



**SOUTH AFRICA: ROAN & ELAND**



# SOUTH AFRICA: SABLE



# SOUTH AFRICA: HARTEBEEST AND WILDEBEEST

Red Hartebeest



Lichtenstein Hartebeest



Kings Black Wildebeest



Hartebeest Slam

Golden Wildebeest



Black Wildebeest



Blue Wildebeest



Wildebeest Slam

# SOUTH AFRICA: KUDU AND NYALA



**Kudu Slam**



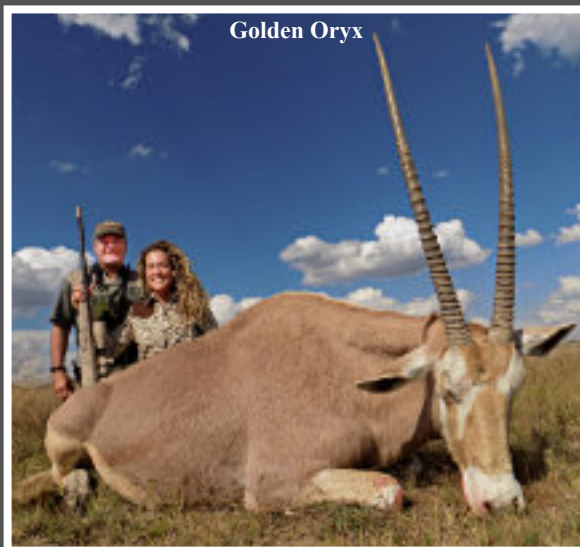
**Nyala Slam**

# SOUTH AFRICA: GEMSBUCK, WATERBUCK, BUSHBUCK, TSESSEBE



Gemsbuck Slam

Bushbuck Slam



# SOUTH AFRICA: LECHWE, REEDBUCK AND ZEBRA

Common Reedbuck



Reedbuck Slam

Hartmann/Mountain Zebra



Zebra Slam

Red Lechwe



Lechwe Slam

Mountain Reedbuck



Burchell Zebra



Kafue Lechwe



# SOUTH AFRICA: BLESBUCK AND SPRINGBUCK SLAM

## Blesbuck Slam



## Springbuck Slam

# SOUTH AFRICA: IMPALA, GIRAFFE, BONTEBUCK

## IMPALA SLAM

Black impala



Common Impala



White-flank Impala



Saddle Back Impala



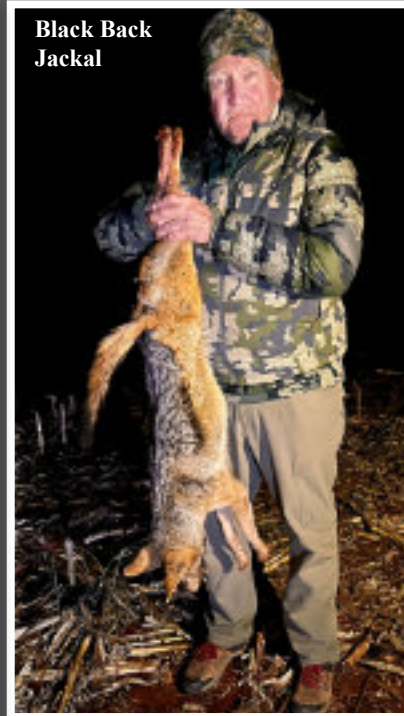
Bontebuck



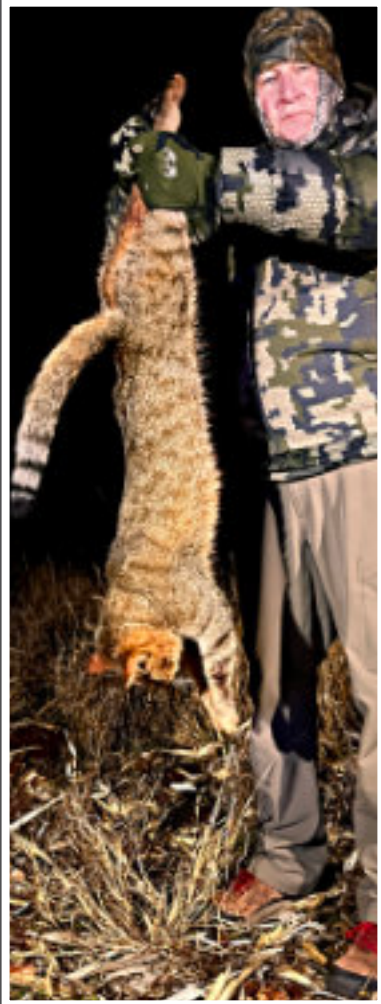
Giraffe



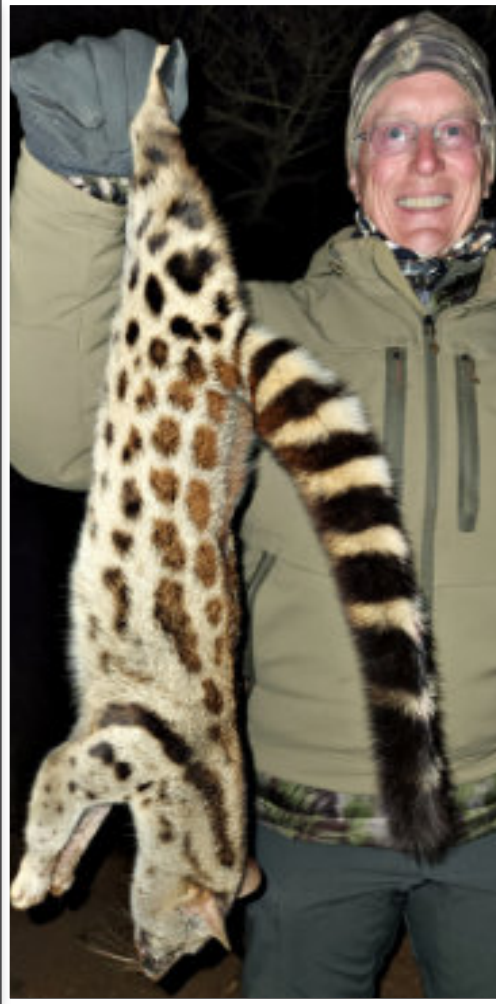
# SOUTH AFRICA: OTHER



**SOUTH AFRICA**  
**SMALL CATS SLAM**



African Wildcat



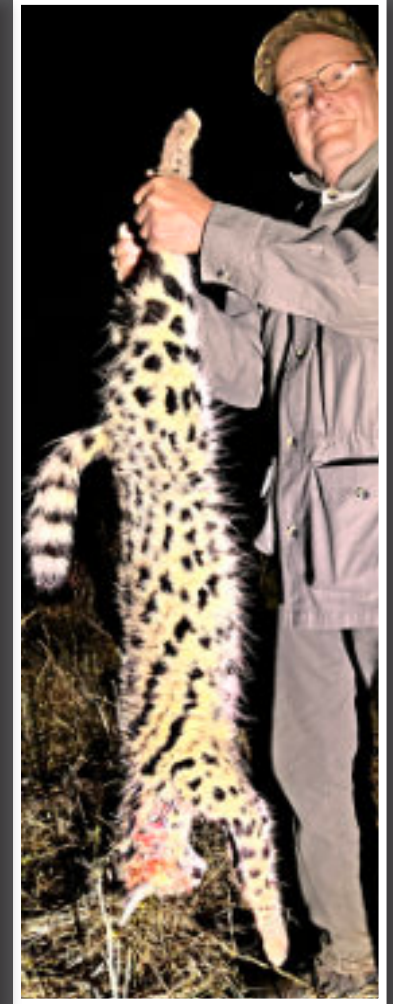
Rusty Spotted Genet



Civit



Caracal



Serval

# SOUTH AFRICA - Tiny Ten



Cape Grys buck



Sharpes Grys buck



Blue Duiker



Red Duiker



Livingstone Suni



Common Bush Duiker

# SOUTH AFRICA - Tiny Ten

Southern Africa Oribi



Steenbuck



Vaal Rhebuck



Klipspringer

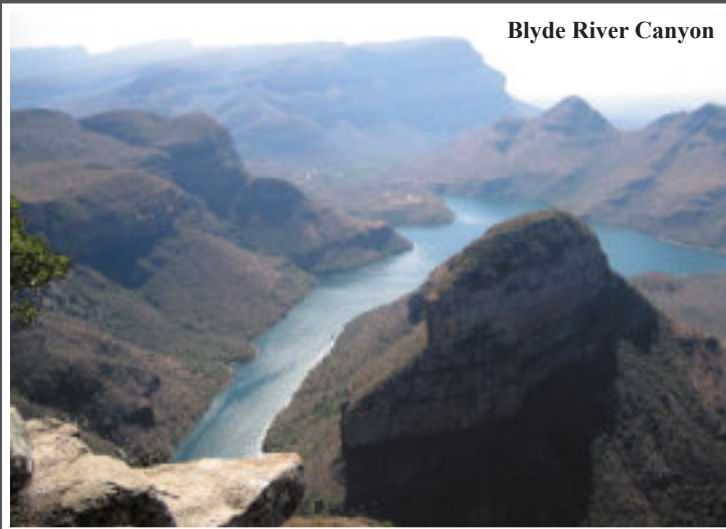


# SOUTH AFRICA SIGHTSEEING AND TOURS

South Africa is not only a prime hunting destination but a very popular touring and sightseeing destination too. We are fortunate to have the best tourist destinations on our doorstep. Add a few days to your safari to explore the following:

- Cape Town, its vineyards and peninsula, Table Mountain, Kirstenbosch Botanical Gardens and Constantia;
- Hermanus and Whale watching;
- The Garden Route;
- Kimberley's mining history;
- Sun City and the Lost City;
- Various cultural villages/tribal dancing:

- Mpumalanga's Panorama Route (Blyde River Canyon, God's Window, Potholes, Graskop);
- Kruger National Park;
- Tiger fishing, Trout fishing and scuba diving;
- For the adrenalin junkies we have elephant back safaris, shark-diving, quad bike routes, horse riding, aerial cable trail and many more;
- A famous golf course – Leopard's Creek – is a few minutes from one of our concessions.



Blyde River Canyon



Cape Town



Tribal Villages



Kruger National Park

# OTHER AFRICAN COUNTRIES: TANZANIA & ETHIOPIA & LIBERIA

From time-to-time Peter accompanies his clients to other countries in Africa. His extensive knowledge and support to clients contributes to the success of such a safari. The safaris include Zambia, Etiopia as well as the savannah and forest area of Cameroon.

## TANZANIA

Species: Elephant, Lion, Leopard, Buffalo, Lesser Kudu, Sitatunga, Fringe Eared Oryx, Southern Gerenuk, East African Eland, Roberts and Grant's Gazelle, Cokes Hartebeest, White Bearded wildebeest, East African Bohor, Kirk's Dik-Dik and many more.

## ETHIOPIA

Species: Mountain Nyala, Menelik's Bushbuck, Colobus Monkey, Spotted hyena, Abyssinian Bohor Reedbuck, Swayne's Dik-Dik, Soemmering's Gazelle, Northern Gerenuk, Harar Dik-Dik, Hamadryas Baboon, Northern Grant's Gazelle, Lesser Kudu, Guenther's Dik-Dik,

## LIBERIA

Species: Zebra duiker, Yellow-back duiker, Black Duiker, Western Bay Duiker, Oligby Duiker.



# OTHER AFRICAN COUNTRIES

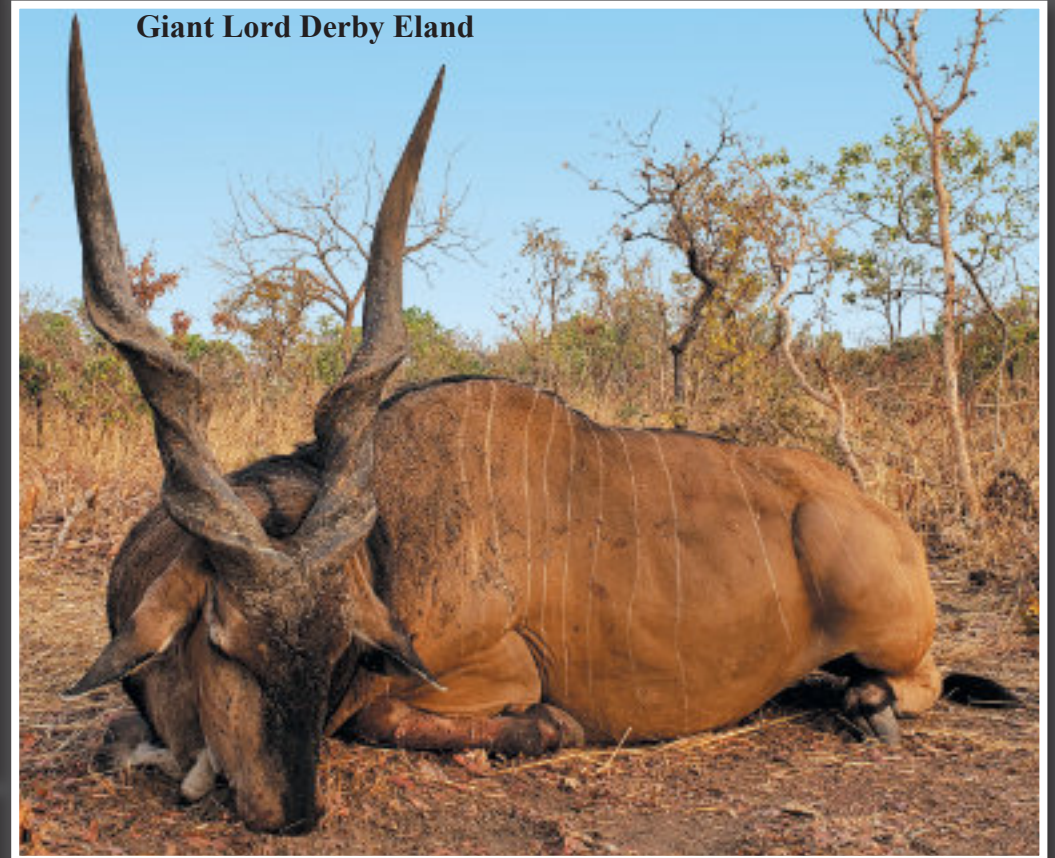
## CAMEROON RAIN FOREST

Hunting season: March to June. Species: Bongo, Forest sitatunga, Forest Elephant, Giant forest hog, Gabon duiker, Bushpig, Blue duiker, Dwarf Buffalo, Peter's duiker, Ogilby's duiker, Bay duiker, Black-fronted duiker, Bate's pygmy antelope



## CAMEROON SAVANNAH

Hunting season: January to April. Species: Giant eland, North Western buffalo, Hippo, Elephant, Western Roan, Sing-Sing waterbuck, Western Hartebeest, Nigerian Bohor reedbuck, Western cob, Harnessed bushbuck, Warthog, Western Bush duiker, Red-flanked duiker, Oribi, Baboon, Phyton, Civit.







**LIFE - FORM**  
TAXIDERMY

*Realism · Beauty · Permanence*  
*Guardian of the Hunters' Dreams*



[www.lifeformtaxidermy.com](http://www.lifeformtaxidermy.com) [art@lifeform.co.za](mailto:art@lifeform.co.za)